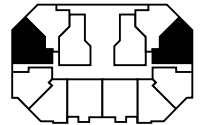
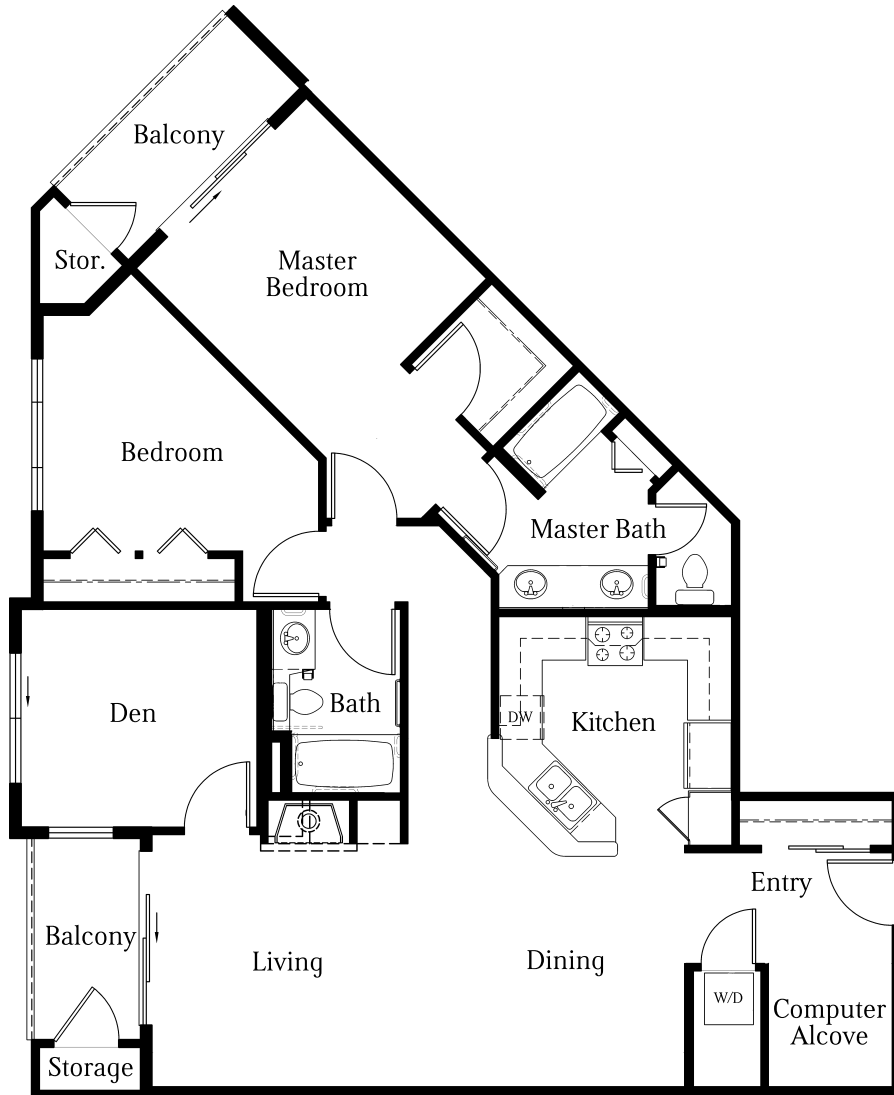


VERDEAUX



Floor Plan E

Two Bedrooms/Two Baths plus Den; 1,207 square feet



0 1' 2' 3'
SCALE

Seller shall construct the Unit substantially in accordance with the floor plans and specifications; provided however that Seller reserves the right to make changes to the floor plans and specifications, appliances and finishes to accommodate Seller's revisions made during final design and the construction process, or to substitute materials or other items provided that the Unit as constructed does not substantially differ from that described in the attached floor plan and the appliances and finishes do not differ from those specified in terms of their overall function and appearance. Minor deviations and variations involving fixtures, appliances, finishes, materials and decorative or finish work shall not be considered substantial. Dimensions and measurements are based on architectural drawings and are not considered final.